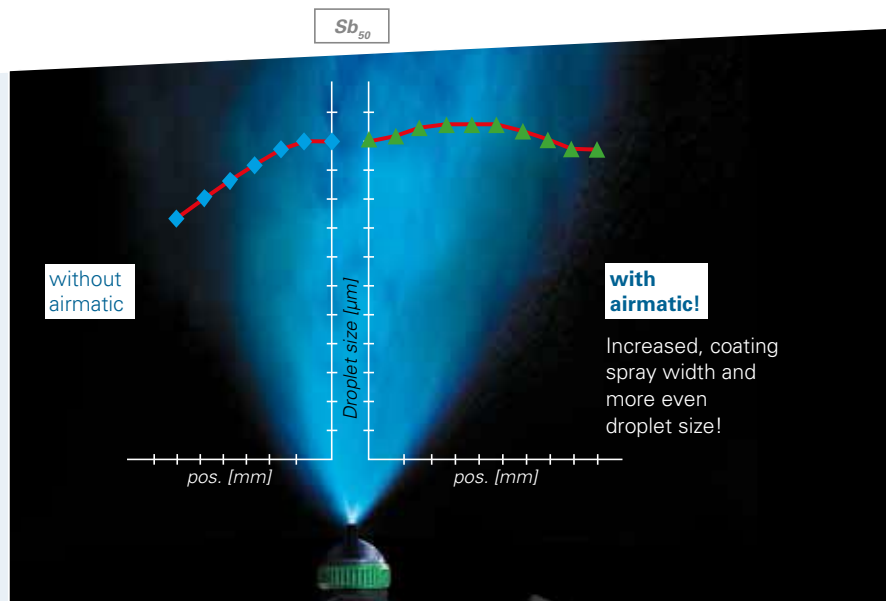
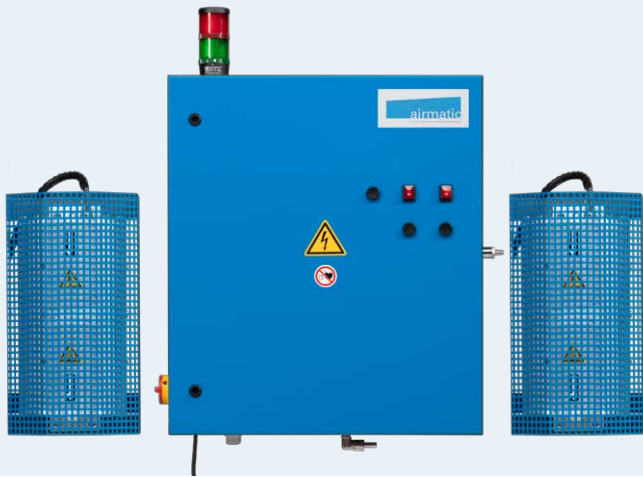


airmatic

ensutec | Environment and Surface Technologies

Painting at the highest level!

THE innovative system for all air atomising application processes!



Increase your transfer efficiency with the airmatic spray optimisation!

Reduce
Your
Overspray!



ensutecTM

Environment and Surface Technologies

Advantageous!



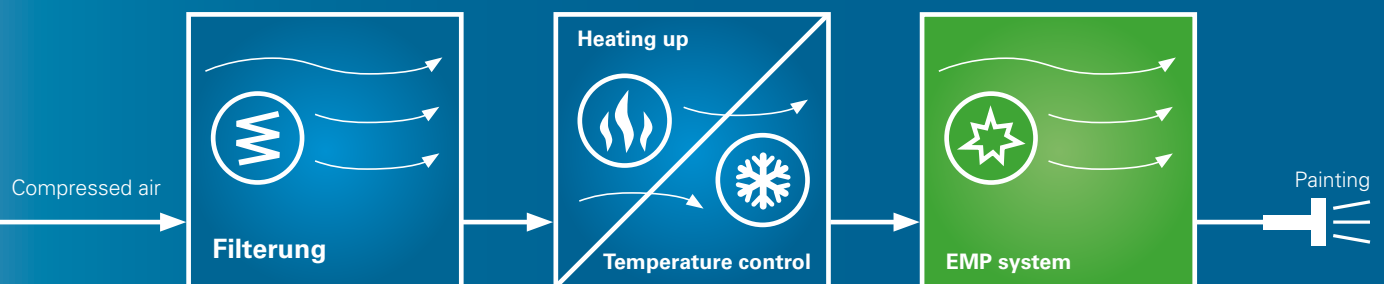
airmatic spray optimisation gives your application the following advantages:

- **Save by reducing the overspray**
- **Compressed air saving**
- **Increased, coating spray width (Sb_{50})**
- **More even distribution of droplet size**
- Less soiling of the surface
- Improved material and energy efficiency as per DIN EN ISO 50001
- Fewer rejects and re-working
- Increased transfer efficiency
- Optimisation of coating thickness distribution
- Better paint separation on the substrate
- Static discharge of the surface



The airmatic components

Heating up · Temperature control · Filtering · EMP system



**Patented system*

Simple!



airmatic is quick and easy to install

- In addition to existing application technology
- Without great outlay
- Can be fitted retrospectively at any time
- As a rule, no major changes necessary to the painting system

Success!

airmatic has proved itself in operation with:



VERESCENCE



Just right!

The right airmatic for every application process!

Paints · Separating agents · Adhesives · Powders · Functional coatings



airmix painting industry



Electrostatic painting



Robotic painting



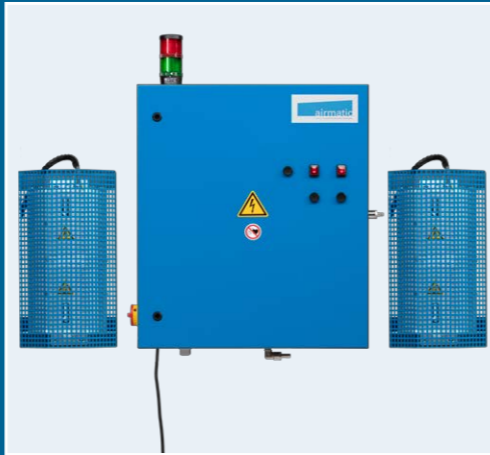
High rotation atomiser with exterior charge



Flat spraying machine

airmatic 350

Basic version for manual painting in workshops and industry.



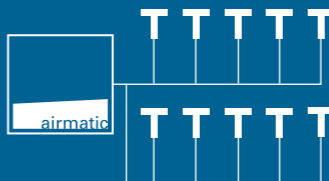
airmatic 500

Complete version for up to 3 paint spray guns



airmatic 3000

"Top version" automatic system for up to 20 paint guns.



Painting with cup guns



airmix painting wood



High rotation atomiser with direct loading



Circuits



Rotating spindle systems



airmatic for your application as well!

With different system versions we have exactly the right solution for you as well!

No matter whether you have a simple manual or a fully automatic painting system, **you can optimise your paint atomisation with airmatic!**

Improve material and energy efficiency as per DIN EN ISO 50001

You too can benefit from innovative airmatic spray optimisation!

Reduce your costs while saving the environment!



Leather

- Water-based paint
- Solvent-based paint

Industry

- Metal
- Water-based paint
- Solvent-based paint
- Powder

Bodywork, Body paintwork repair

- Metal
- Synthetics
- Water-based paint
- Solvent-based paint

Flacons, Bottles

- Glass
- Water-based paint
- Solvent-based paint

Automotive Suppliers

- Synthetics
- Water-based paint
- Solvent-based paint

Furniture, Kitchens

- Wood
- Water-based paint
- Solvent-based paint

Automotive OEM

- Metal
- Water-based paint
- Solvent-based paint



ensutec™ Products GmbH

Altheimer Straße 14
DE-88515 Andelfingen

Tel: +49 7371 96664-20
Fax: +49 7371 96664-29
info@ensutec.de
www.ensutec.de

